

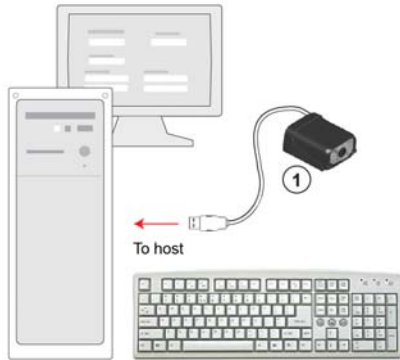
MS-4 - CONFIGURATION

MICROSCAN®



USB (5V)

This is the basic setup for a single USB MS-4 Imager.

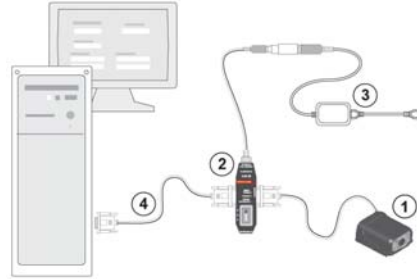


System Matrix

Product	Part Number	Description
(1) MS-4 Imager	FIS-0004-XXXXG	Imager, USB

Stand-Alone (5V)

This is the basic setup for a single MS-4 Imager.

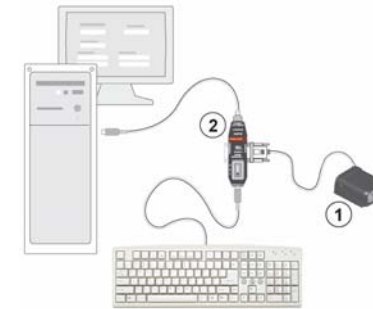


System Matrix

Product	Part Number	Description
(1) MS-4 Imager	FIS-0004-XXXXG	Imager
(2) IB-3PC	FIS-0001-0030G	Keyboard Wedge/Interface Box
(3) Power Supply	97-000002-01	90-264 VAC, +5VDC
(4) Communication Cable	61-000010-02	9-pin socket to 9-pin socket, 6 ft.

Keyboard Wedge (5V)

This setup allows the Imager to bypass the RS-232 port and send data to the host via the keyboard line.

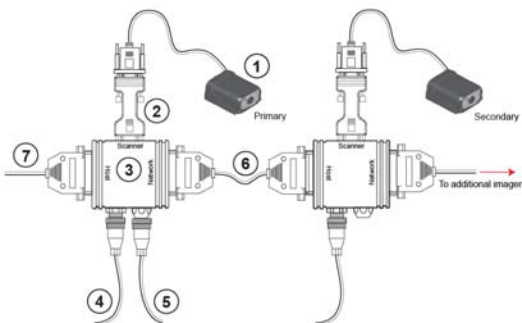


System Matrix

Product	Part Number	Description
(1) MS-4 Imager	FIS-0004-XXXXG	Imager
(2) IB-3PC	FIS-0001-0030G	Keyboard Wedge/Interface Box

Daisy Chain (10-28V)

A primary Imager is linked directly to the host computer. Secondary Imagers are linked in tandem. Data is sent from each Imager to the host.

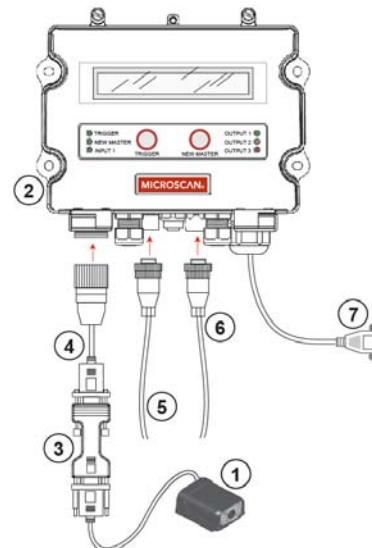


System Matrix

Product	Part Number	Description
(1) MS-4 Imager	FIS-0004-XXXXG	Imager
(2) IC-332	FIS-0001-0035G	Voltage converter (to 10-28V)
(3) IB-131	99-000018-01	Interface Box
(4) Power Supply	97-100004-15	90-264 VAC, 24VDC, USA/Euro plug
(5) Object Detector	99-000017-01	Photo Sensor, Visible, NPN, Dark On
(6) Daisy Chain Cable	61-100029-03	IB-131 to IB-131, 1 ft. (One per MS-4 pair)
(7) Communication Cable	61-300026-03	25-pin plug to 9-pin socket, 6 ft.

Stand-Alone with MS-Connect 210 (10-28V)

This is the basic setup for a single MS-4 Imager and an MS-Connect 210 Connectivity Box.



System Matrix

Product	Part Number	Description
(1) MS-4 Imager	FIS-0004-XXXXG	Imager
(2) MS-Connect 210	FIS-0210-000XG	Connectivity Box
(3) IC-332	FIS-0001-0035G	Voltage converter (to 10-28V)
(4) Reader Cable	61-000127-01	MS-4 to MS-Connect 210 cable, 6 ft.
(5) Power Supply	97-100004-15	90-264 VAC, 24VDC, USA/Euro plug
(6) Object Detector	99-000017-02	Photo Sensor, Visible, NPN, Light On
(7) Host Cable	61-000105-01	MS-Connect 210 to host, user-stripped to 9-pin (included)