

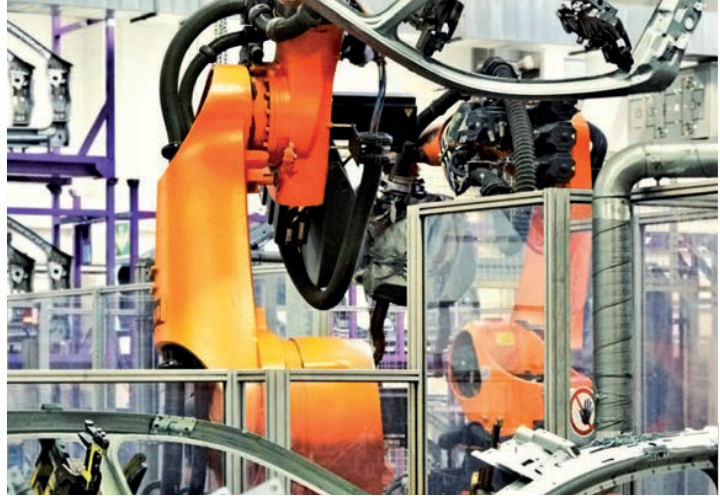
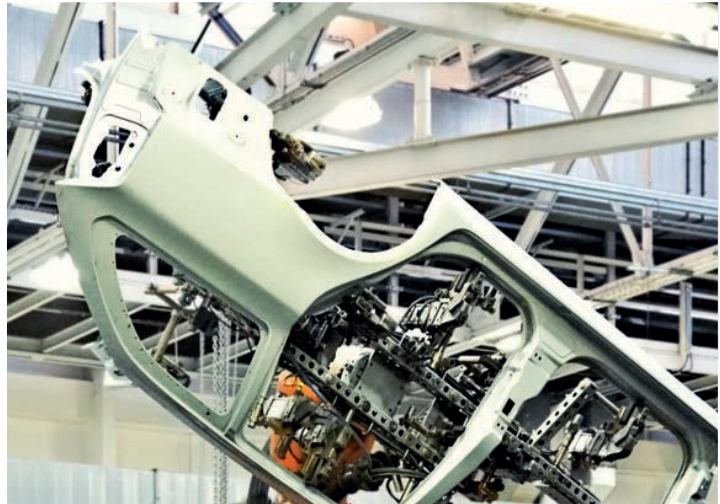
# Products and services

Company **EPRIN spol. s r.o.**

**EPR.IN<sup>®</sup>**

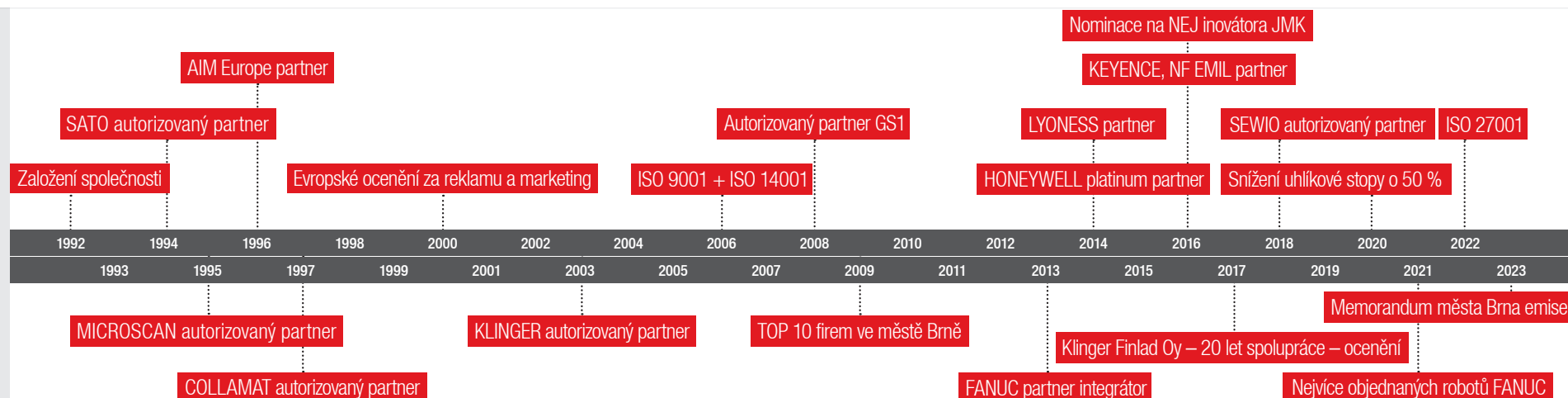
AUTOMATIZACE | DIGITALIZACE | ROBOTIZACE





# Company EPRIN spol. s r.o.

## identification services



- ✓ Customers first
- ✓ An efficient and smart company with a tradition
- ✓ We provide unique and quality solutions
- ✓ We provide service and consultations
- ✓ Innovative and reliable system integrator
- ✓ We bear social responsibility

"Little things make perfection,  
but perfection is no small thing."  
Michelangelo



# Company EPRIN spol. s r.o.

**We look forward to your visit!**



EPRIN spol. s r.o.

Technologický park Brno I Podnikatelská 2956/6, B3 | 612 00 Brno | Czech Republic

# Certified supplier

## expertise, competence and stability...



**EPR.IN**<sup>®</sup>  
AUTOMATIZACE | DIGITALIZACE | ROBOTIZACE

### ✓ ČSN ISO 9001:2016

The standards enable organizations to prove their ability to manufacture or distribute products in accordance with all necessary regulations and customer needs.

### ✓ ČSN ISO 14001:2016

We proactively manage environmental impacts and you continuously improve your environmental management.

### ✓ ČSN ISO/IEC 27001:2017

The information security management system, especially the information security management for employees, processes, IT systems and company strategy.

### ✓ Certificate of stability and high reliability

We meet the strictest economic evaluation criteria according to the Dun & Bradstreet model. The company's credibility reaches the highest grade AA.

### ✓ Accredited partner GS1

Czech Republic

Comprehensive services to ensure a wide range of GS1 standards. Help for companies from professional advice, to services including the introduction and use of barcodes or 2D codes.

### ✓ Certified Family Business

The registration of a family business is approved by the Committee for Family Business and Registration of Family Businesses (hereinafter referred to as the "Committee"), consisting of representatives of the MPO, AMSP ČR, HK ČR

### ✓ FANUC integrator

Our company is qualified and trained to sell, install, calibrate and complete system integration of FANUC robots.



# Featured references

## who is talking about us...



**EPR.IN**<sup>®</sup>  
AUTOMATIZACE | DIGITALIZACE | ROBOTIZACE

**ASSA ABLOY**

**FANUC**



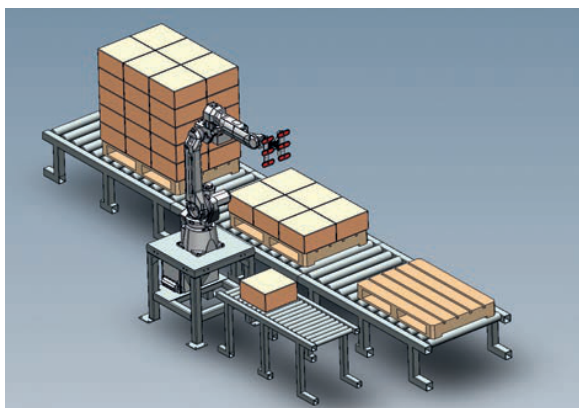
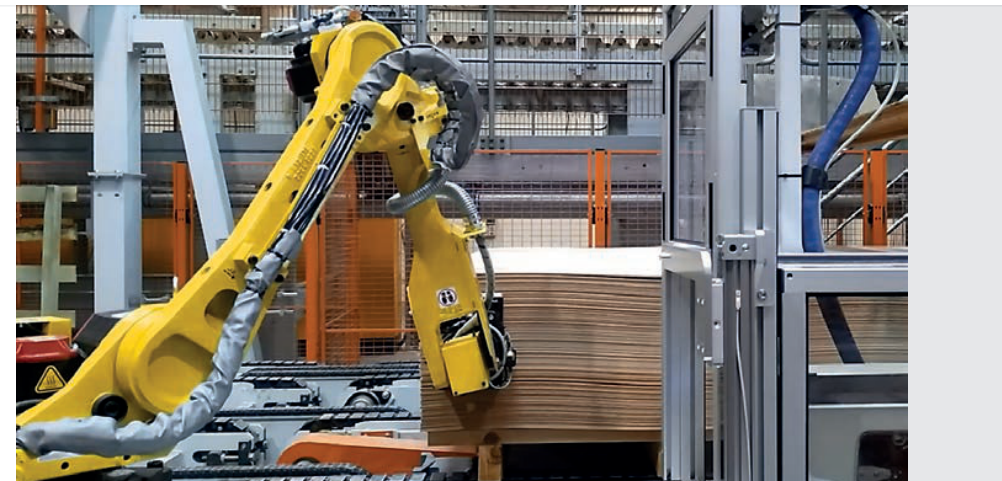
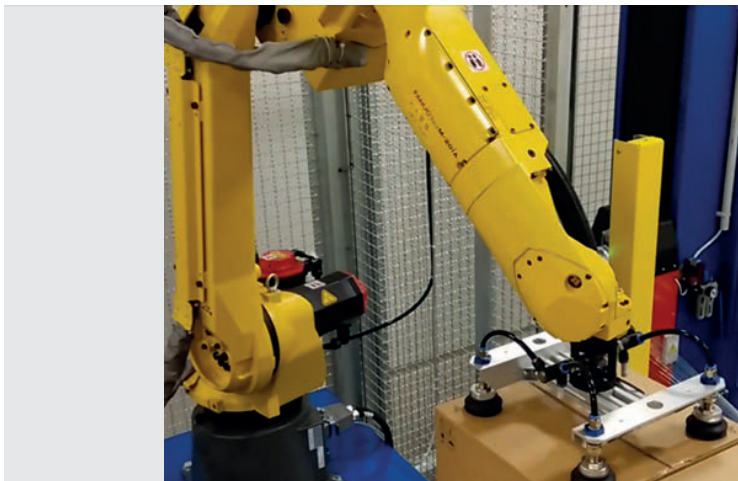
EPRIN offers a wide range of high-quality services in the field of custom-made labels. His team can always be expected to be professional, helpful, and willing to help. Actively participates in product development or optimization of materials and costs for further development of cooperation.

EPRIN has been purchasing robots from us for several years. We value our cooperation above all for its professional level. We understand in matters of quality and we get along thanks to mutual reliability. We simply have very similar values that make our business partnership work perfectly.

The EPRIN company represents a team of professionals who provide us with a quality, fast and comprehensive service. Cooperation takes place on a professional and fair level, which we value in our suppliers.

# Robots

## from smaller one to bigger one...



### RELIABILITY AND ACCURACY TO INCREASE YOUR PRODUCTIVITY

- Optimal for light, medium and heavy robotic workplaces
- Japanese quality and tradition of the FANUC brand
- Unique application head solution for robotic arm
- Efficiency, speed and accuracy of application

FANUC machines cover a wide range of applications and industries

		LR Mate 200	Arc Mate 0	M-20	M-10
maximální nosnost zápěstí	kg	4 nebo 7	3	12–35	7–12
dosah	mm	550–911	1437	1663–2009	1633–1420
mechanická hmotnost	kg	19–27	145	185–252	130–150

# Ventus applicators

## label in hundred ways ...



**EPR.IN**<sup>®</sup>  
AUTOMATIZACE | DIGITALIZACE | ROBOTIZACE



### AUTOMATIC APPLICATORS WITH PRINT

- Application of labels in an industrial environment
- Unique design and construction
- Modification for maximum efficiency and satisfaction customer
- Deployment in the most demanding online systems
- Quick installation
- Simple operation
- Tailored solutions

		VENTUS 520	VENTUS 620	VENTUS 920	VENTUS 920VL	VENTUS 1020
typ aplikace		bezdotykový aplikátor (Blow)	pístový aplikátor (možnost o rozšíření Blow)	klapkový aplikátor	klapkový aplikátor	klapkový aplikátor 90° (možnost o rozšíření Blow)
rozměr etiket	š × v (mm)	25–120×30–150	25–150×20–300	25–120×40–150	25–150×40–150	25–120×30–120
rychlost aplikace	max. ks / min	100 (etiketa 25×30 mm)	60 (etiketa 25×20 mm)	60 (etiketa 25×40mm)	20 (etiketa 25×40mm)	30 (etiketa 25×30mm)
ovládací panel		LCD display 4 řádky, klávesnice, CZ menu				
provedení		pravé/levé				
tiskárna etiket		SATO S84-ex, ZEBRA ZE500, Datamax A – Class rozlišení: 203, 305, 609 dpi				
rozměry	š × v × h (mm)	500×700×365–455				
pracovní prostředí		5~+40 °C, 15~90 % nekondenzující				
napájení		220/240 V, 50/60 Hz				
přívod tlak. vzduchu	6 bar, max. l / min	100	60	60	10	60

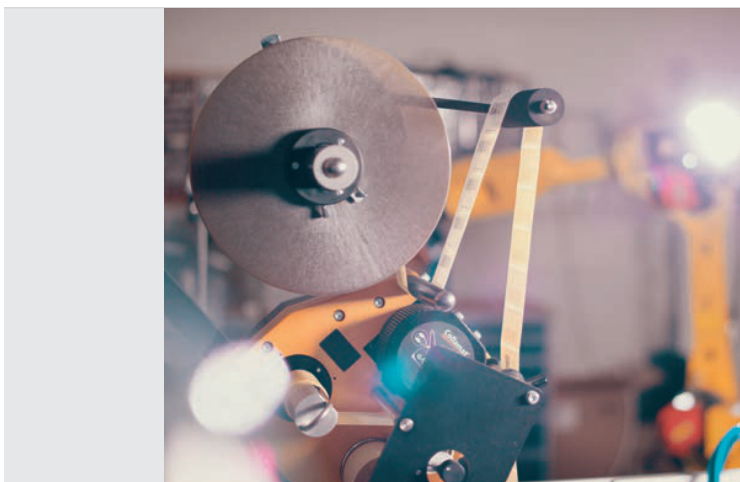


# Collamat applicators

## label in thousand ways ...



**EPR.IN**<sup>®</sup>  
AUTOMATIZACE | DIGITALIZACE | ROBOTIZACE



### AUTOMATIC APPLICATORS WITHOUT PRINTING

- Top market in label application
- Swiss" reliability
- High application speed and accuracy
- Easy user settings
- Possibility of application to various product surfaces
- Extreme durability

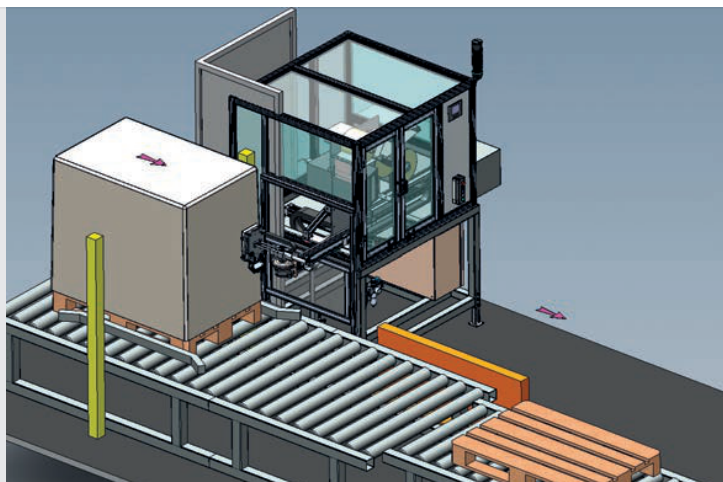
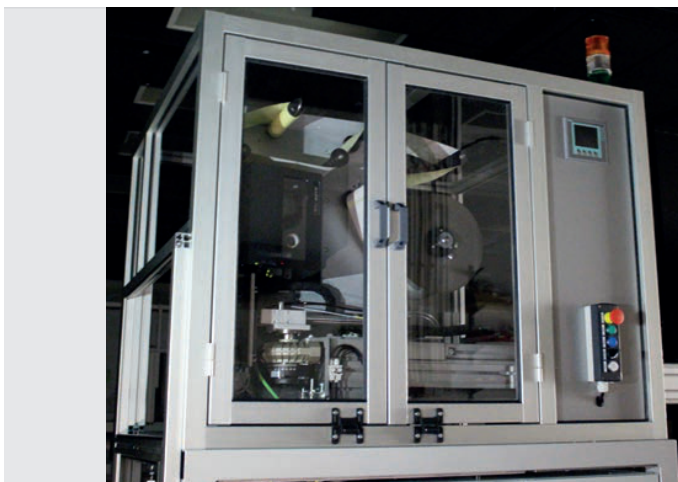
		COLLAMAT 2600	COLLAMAT 4300	COLLAMAT 6600	COLLAMAT S50/100
rychlost	m / min	3–15	1–25	3–30	3–50
šířka štítku (včetně podkladového papíru)	mm	10–95	10–160		10–250
přesnost označení	mm	± 0,5	± 0,7	± 1	± 0,5
výstup signálu		ano			

# EPRIN applicators

## label in milion ways ...



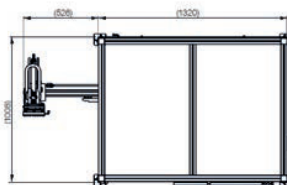
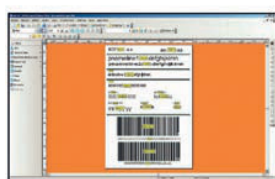
**EPR.IN**<sup>®</sup>  
AUTOMATIZACE | DIGITALIZACE | ROBOTIZACE



### APPLICATORS FOR MARKING PALLETS

- Efficiency of the work process in production
- Custom-made equipment
- Suggestions on how to apply labels
- Recommendation of label and material surface
- Variability of software functions

One of the EYP810 versions is equipped with an application head with movement in a linear axis, suitable for marking pallets from the side on a conveyor track.



EYP810		
rychlost aplikace	palety / hodina	až 100
aplikační cyklus	sec	do 35
etiketa		standardně A5 (do 148x210mm)
řízení		místní PC / server
tlakový vzduch při provozu	bar	4–6
provedení		pravá / levá
nosný rám		svařenec
scan čárového kódu		ihned po nanesení etikety

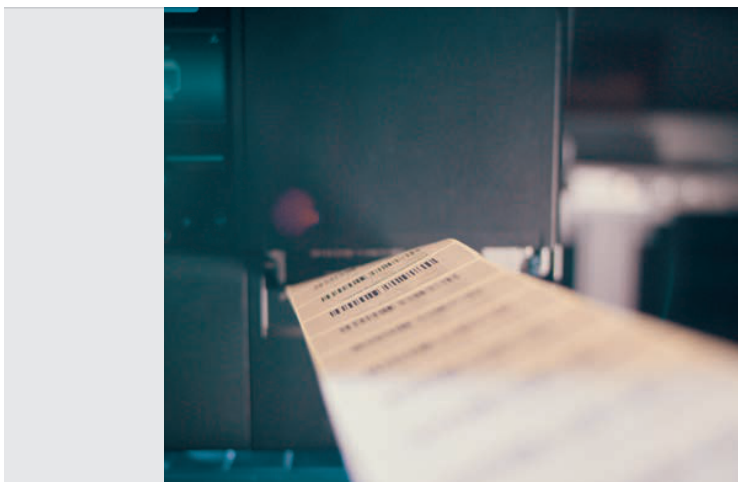


# Printers

## your own label



**EPR.IN**<sup>®</sup>  
AUTOMATIZACE | DIGITALIZACE | ROBOTIZACE



### MOBILE PRINTERS

- Lightweight, portable, lower acquisition costs

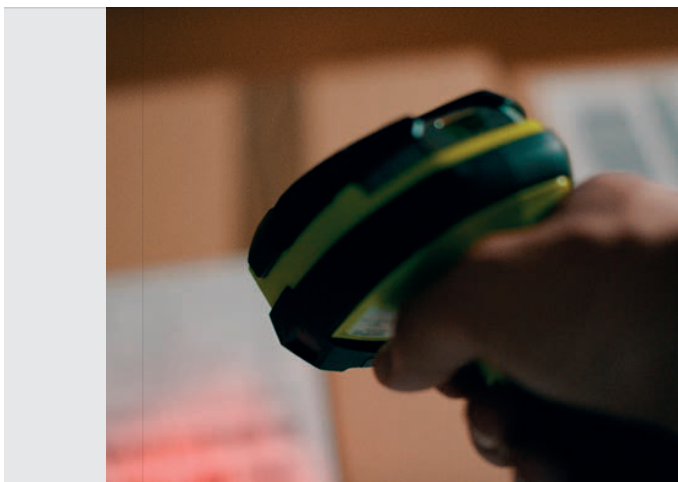
### INDUSTRIAL/DESKTOP PRINTERS

- Higher print volume, highly durable, maximum performance

způsob tisku	Thermotransfer nebo direct thermal tisk	
rozlišení tisku	203, 305, 609 dpi (8 bodů, 12 bodů, 24 bodů)	
rychlost tisku	Mobilní: 50–100mm/s	Stolní: 100–300mm/s
šířka média	2"–8"	
vstup	Display nebo tlačítka	
rozhraní	USB, Paralel, WiFi, Ethernet, Bluetooth	
periferie	Stříhač, odnímač, převíječ, printserver...	

# Barcode scanners

## scanning is easy ...



### TYPES OF SCANNERS

- 1D scanners – lower acquisition costs, a wide range of uses
- 2D scanners – readability of all known codes, including 1D
- Hand-held scanners – ergonomic shape and light weight
- Stationary scanners – mounting on production lines, integration into the customer's device
- Pocket scanners - low weight, connection via Bluetooth to devices with Windows, iOS and Android
- Finger scanners - connection with a wearable terminal, hands free when working, saving time

# Handheld terminals

## handheld and trolleys ...



### TYPES OF TERMINALS

- Hand terminals – design with or without a handle
- Wearable terminals – free hands while working, saving time
- Trolley terminals – stationary device, large display, the possibility of connecting barcode scanners and other devices (keyboard, mouse, etc.)

### PROPERTIES

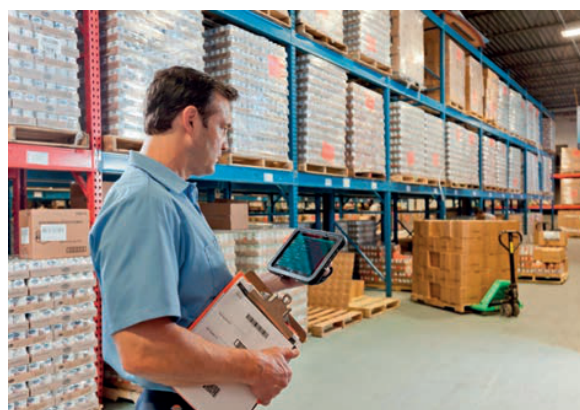
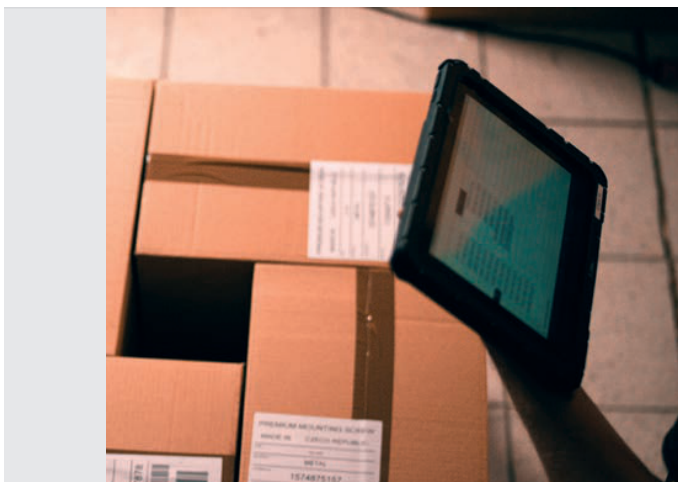
- Display – 2.8"–3.7"
- Design – without handle or with pistol grip
- OS – Windows CE, Windows Embedded Handheld, Android
- Resistance – IP54–IP67
- Weight – 250–550 g
- Peripherals – charging and communication bases, holders, protective cases, battery chargers

# Tablet

## robust and professional ...



**EPR.IN**<sup>®</sup>  
AUTOMATIZACE | DIGITALIZACE | ROBOTIZACE



### DURABLE INDUSTRIAL TABLETS SURPRISE WITH PERFORMANCE

- Light, mobile and stylish device
- Emphasis on maximum durability and ergonomics
- Drop resistance and water protection standards and dust
- High-capacity battery and integrated GPS
- Display with sharp legibility even in direct sunlight
- Security processor to protect against misuse

### PROPERTIES

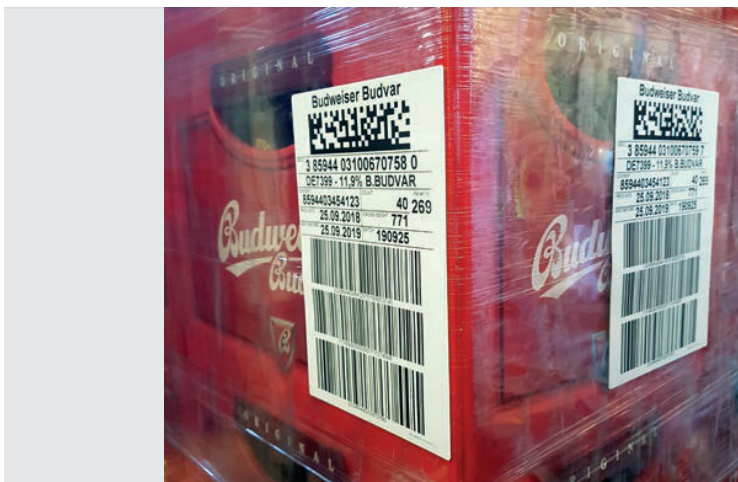
- Display – 5" and above
- OS – Windows 10, Android
- Power supply - mains supply, VZV, power supply from the car's on-board network
- Barcode scanning - integrated sensor or external bluetooth sensor
- Advantages – the ability to choose the display size
- OS selection option
- the possibility of connecting other external devices (barcode scanner, etc...) – a large range of peripherals



# Software tailored our software, your comfort ...



**EPR.IN**<sup>®</sup>  
AUTOMATIZACE | DIGITALIZACE | ROBOTIZACE



## APLICONTROL CONTROLLED PRINTING IN PRODUCTION

- Complex management software for applying labels to pallets and products



## EPOSS PROPERTY INVENTORY

- Reliable system of accurate and fast asset inventory
- Individual solutions for companies of all sizes
- Significant acceleration of the inventory process
- Connection to the information system
- Working with data collection terminals using barcode, 2D code or RFID
- Network version for large companies



## SMART ECONIT WASTE RECORD SYSTEM

- Registration system, thanks to which all components of waste are clearly sorted and registered according to the online waste catalog
- Online waste management solution - Complete overview of waste management in your municipality
- Invoices for services from the collection company under control
- Motivational tool for citizens to sort responsibly



# EWA WMS systems

## warehouse under 100% control ...



**EPR.IN**<sup>®</sup>  
AUTOMATIZACE | DIGITALIZACE | ROBOTIZACE



### ADVANTAGES OF EWA WAREHOUSE

- Significant cost savings due to acceleration of warehouse processes
- Immediate and accurate information about the status of the warehouse and the location of the goods
- Flexible software open to customization
- Minimum requirements for knowledge of the warehouse and goods
- Quick training of employees

# Robotic warehouses

## total robotic warehouse ...



**EPR.IN**<sup>®</sup>  
AUTOMATIZACE | DIGITALIZACE | ROBOTIZACE



### ADVANTAGES OF IDEASTORAGE ROBOTIC WAREHOUSES

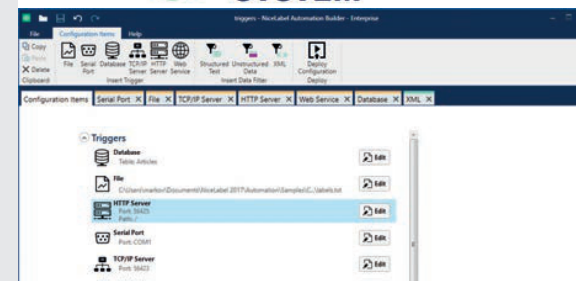
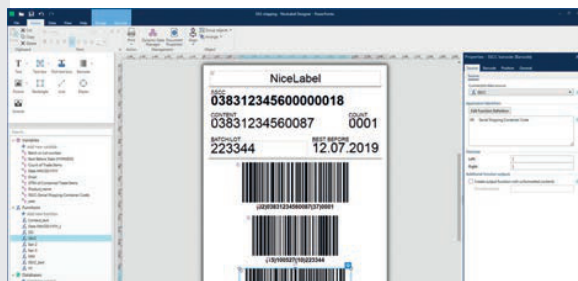
- We can turn up to 90% of the warehouse's cubic capacity into a functional logistics system and thus double its capacity.
- The robots in the warehouse work with the commitment of the employee of the year 24/7. It doesn't really deal with time, light, heat or vacation.
- One robot can handle 20 fully loaded boxes per hour. Existing and new. He doesn't get tired, he doesn't make mistakes.



# Loftware NiceLabel software for printing ...



**EPR.IN<sup>®</sup>**  
AUTOMATIZACE | DIGITALIZACE | ROBOTIZACE



# Consumable materials

## the best printing ...



**EPR.IN**<sup>®</sup>  
AUTOMATIZACE | DIGITALIZACE | ROBOTIZACE



### SPECIFIC SOLUTIONS IN THE FIELD OF MARKING

- Consumables for TTR printers of all types and brands
- Wide range of self-adhesive labels and carbon tapes
- Proofreading of graphic designs
- Fulfillment of technological, packaging, hygiene requirements and storage requirements
- Materials innovation
- Expert advice
- Sustainable and recycled rPET liner materials

### TYPES OF CARBON TAPES

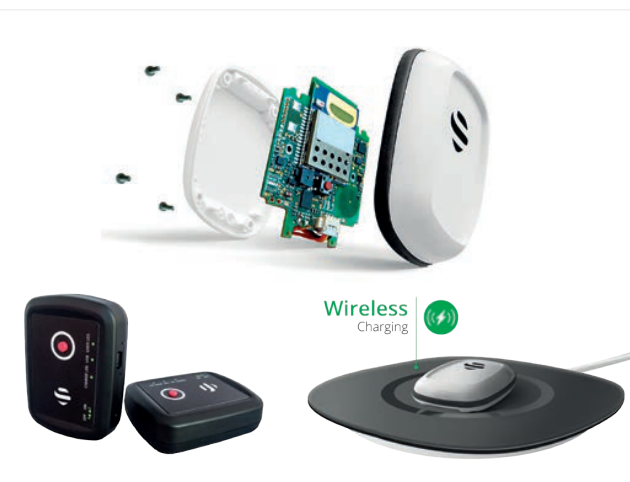
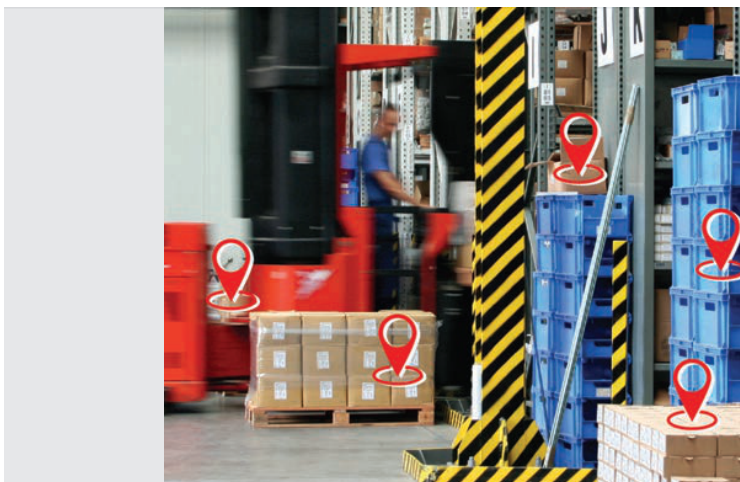
- WAX – Wax tape for basic types of labels
- WAX/RESIN – Wax tape with resin with higher print quality requirements
- RESIN – Resin with high abrasion resistance and chemicals
- COLOR – Color printing of labels and textile materials
- Carbon tapes for textile printing
- Thermosetting film

# RTLS

## real-time location system ...



**EPR.IN**<sup>®</sup>  
AUTOMATIZACE | DIGITALIZACE | ROBOTIZACE



### ADVANTAGES

- Accuracy of tracking objects up to 30 cm
- Possibility to track position in X, Y, Z axes
- Easy installation of RTLS peripherals
- Easy expansion by connecting another anchor
- Resistance to UWB frequency interference
- Immediate and graphically processed outputs
- Hardware – Sewio RTLS tags, transmitting antennas “anchors”
- Software – Sewio RTLS studio – All in One solution



# RFID

## batch identification ...



**EPR.IN**<sup>®</sup>

AUTOMATIZACE | DIGITALIZACE | ROBOTIZACE



### ADVANTAGES

- Elimination of human error
- Bulk and automatic scanning of objects
- Accurate warehouse information for inventory management
- Increased savings by reducing incorrect deliveries
- Monitoring of production work

### OPTIONS

- Hardware – mobile terminals, fixed readers and antennas, printers
- Modifiable RFID gates with signaling

# Wi-Fi

## smart networks ...



### WIFI COVERAGE MAKES COMMUNICATION SIGNIFICANTLY EASIER

- High performance for demanding operations and offices
- Robust construction with high resistance
- Easy and quick installation

dosah signálu	30–80 m (podle prostředí a typu AP)
zabezpečení	standardní WPA2 s možností rozšíření (SuiteB algoritmus)
počet AP v síti	virtuální kontroler – až 128 AP, HW kontroler – až 2048 AP
počet klientů na jeden AP	35 a více
napájení AP	PoE nebo externě AC/DC

# Vision systems

## vision for your machines ...



**EPR.IN**<sup>®</sup>  
AUTOMATIZACE | DIGITALIZACE | ROBOTIZACE



### WIDE RANGE OF USE AND HIGH PERFORMANCE

- Usage in the field of automation
- Perfect resolution of shapes, colors
- Measurement to the accuracy of mm units
- Possibility of guiding robots
- Simple deployment
- Scanning and checking barcodes and OCR
- Reverse data check
- Possibility of deploying LumiTrax technology
- Variability of components

Kamerové systémy		CV-X170			CV-X450	
hlavní obrazový procesor		DSP			DSP (3 jádra)	
max. připojených kamer		4			4	
podporované kamery		0,31 Mpix až 0,47 Mpix, 2 Mpix, 5 Mpix, 21 Mpix				
		CA-HX048C/M, CA-HX200C/M, CA-HX500C/M				
Kamerové senzory		H150MA	H500CA	H500MA	H2000MA	
vzdálenost sním. objektu	mm	50–150	50–500	50–500	300–200	
rozměr zorného pole	mm	9×12 – 27×36	18×25 – 157×210	18×25 – 157×210	33×45 – 225×300	
Čtecí systémy		SR1000	SR1000W	SR2000	SR2000W	SR75x
vzdálenost sním. objektu	mm	110–1000	50–600	100–2000	50–1000	20–800
rozměr zorného pole	mm	30×24 – 312×250	35×28 – 384×307	32×24 – 600×495	57×43 – 881×661	15×15 – 150×150



# Services

## design, support and service ...



**EPR.IN**<sup>®</sup>  
AUTOMATIZACE | DIGITALIZACE | ROBOTIZACE



### SERVICE

- We provide customers with comprehensive project services, professional advice and consultations

### SERVICE SERVICES

- Equipment service
- Service contract
- Regular service inspections
- Operator training

### LOANS AND SUPPORT

- Samples of labels and carbon tapes, printers
- Sensors
- Terminals and tablets
- RFID technology including RFID gateway, RTLS localization platform
- WIFI access points and more

### DESIGN AND DEVELOPMENT

- Separate design department
- Custom equipment design
- Custom 3D printing of models
- Processing designs of applicators, robotic workplaces, camera systems and others
- Cooperation with suppliers of information systems



# Nature and honey

## greener and better future ...



The way we live has a huge impact on nature, which as we know disturbs the balance of the ecosystem. This means that some species are in increasing danger of extinction, due to environmental pollution.

Bees are a good example of all this. Pollination of flowers plays a vital role in maintaining our plant world and thus the diversity of nature.

Thank you for supporting our project  
[www.zachrantevcely.cz](http://www.zachrantevcely.cz)



EPRIN spol. s r.o.

Podnikatelská 2956/6, B3 | 612 00 Brno | Česká republika

+420 538 707 200 | [eprin@eprin.cz](mailto:eprin@eprin.cz)

[www.eprin.cz](http://www.eprin.cz) | [www.digisklady.cz](http://www.digisklady.cz)

